

DATA SHEET

U 5.301

ROTARY VANE- VACUUM PUMPS

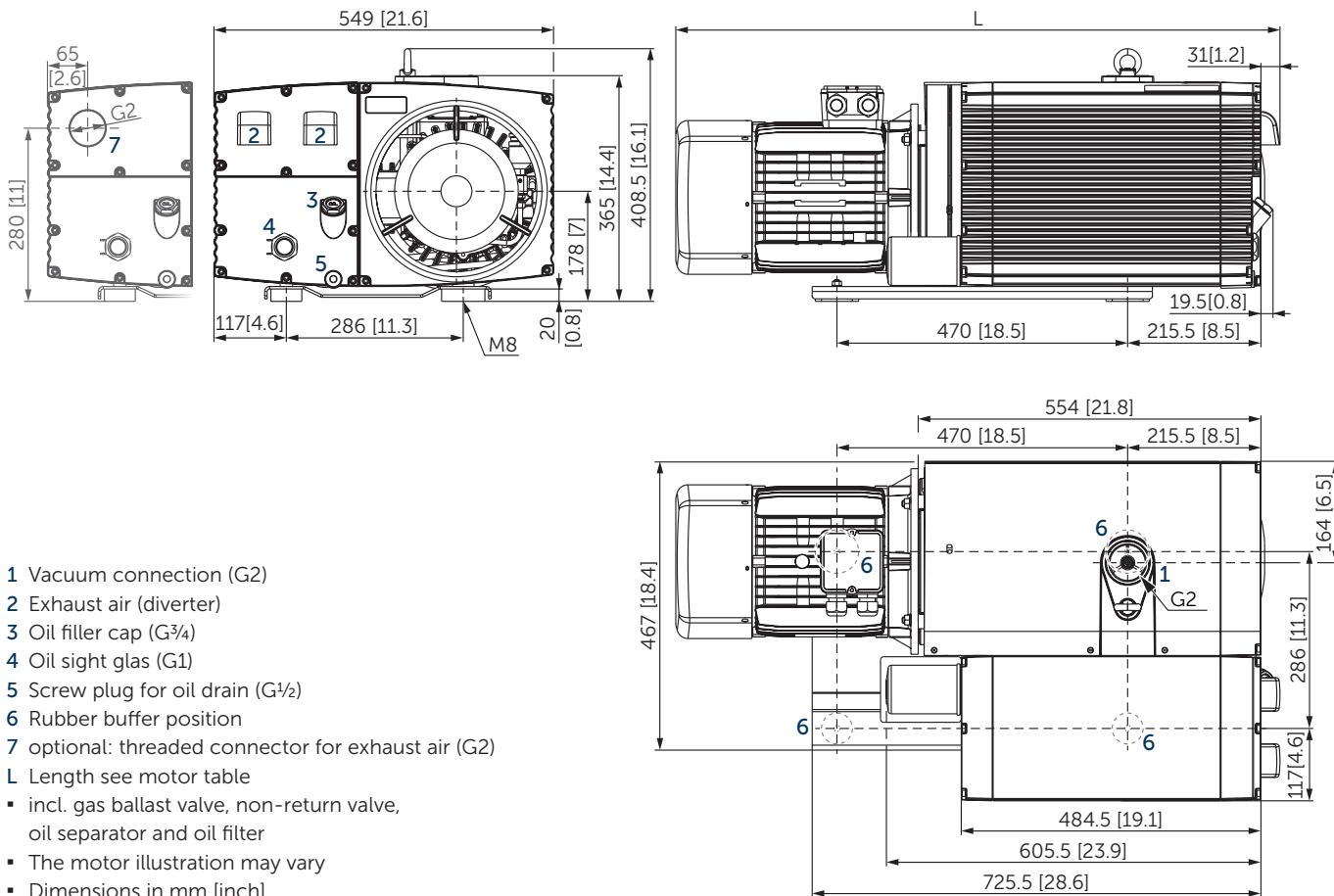
oil-lubricated

air-cooled

MAKE IT BECKER.



figure U 5.201



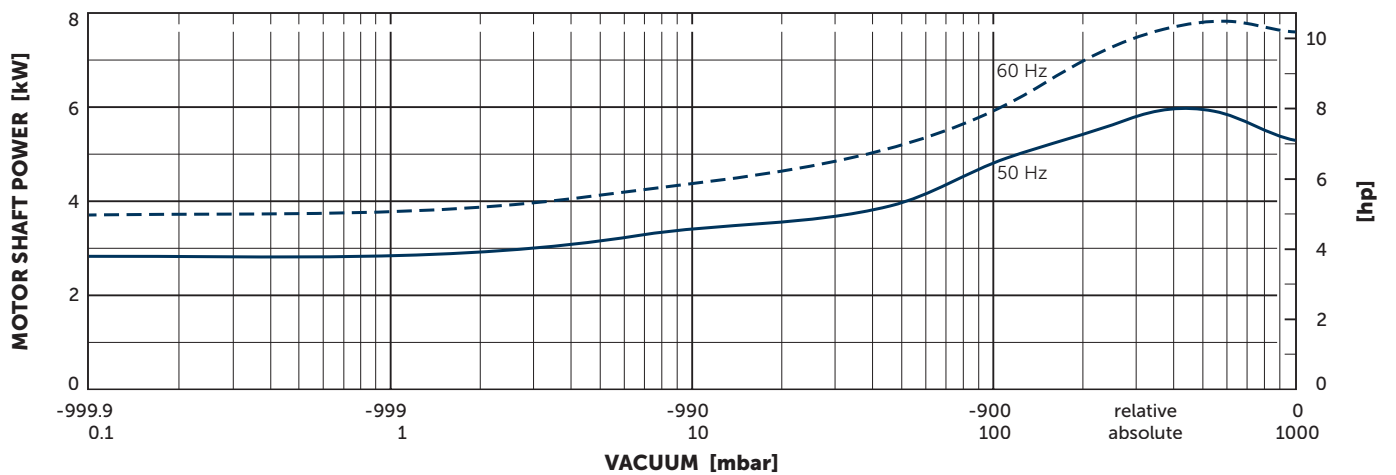
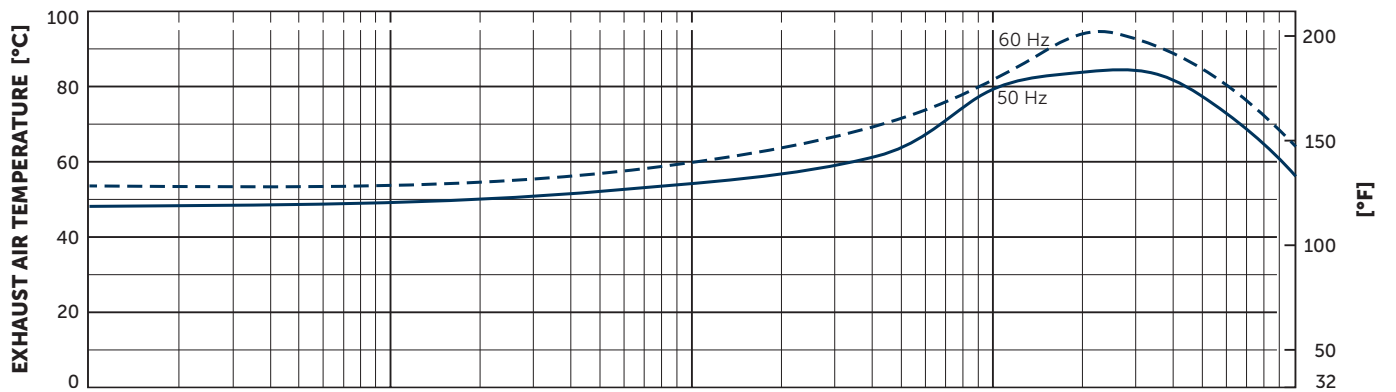
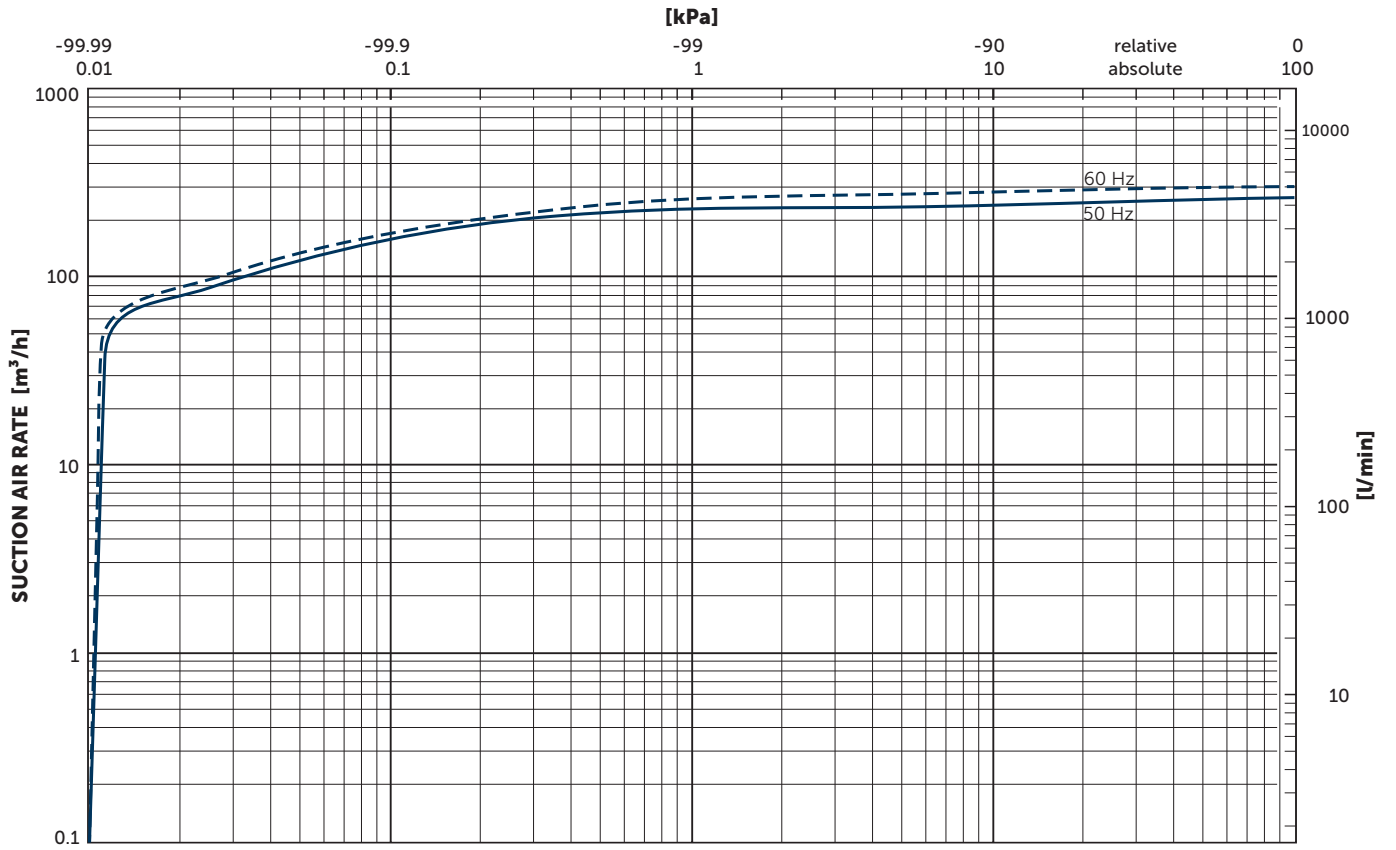
| Nominal capacity | | Vacuum absolute for continous operation | | Motors | | Emission sound pressure level ²⁾ | | Weight w/o motor | Oil ³⁾ |
|-------------------|-------|---|----------|--------|-------|---|-------|------------------|-------------------|
| m ³ /h | | mbar | | kW | | dB(A) | | kg | l |
| 50 Hz | 60 Hz | 50 Hz | 60 Hz | 50 Hz | 60 Hz | 50 Hz | 60 Hz | | |
| 300 | 360 | <0.1–100 | <0.1–100 | 5.5 | 6.6 | 73 | 76 | 90 | 6 |
| 300 | 360 | <0.1–400 | <0.1–400 | 7.5 | 9.0 | 73 | 76 | 90 | 6 |

¹⁾ According to DIN EN ISO 11203, accuracy class of measurement: class 2, extended measurement uncertainty: 3 dB 1 m [39.4 inch] distance, at medium load, both connection sides piped

²⁾ Becker Lube M100 mineral • S100 synthetic • SL100 food packaging applications • SM100 food processing applications
 ▪ Gas ballast valve: vacuum 1.0 mbar abs. with opened gas ballast valve; water vapour tolerance max. 40 mbar; water vapour capacity max. 5.0/5.6 l/h 50/60 Hz (at 85°C operating temperature)

| 3~ Motors | | | | | | | | | | | | L | |
|-----------|-------|-----------|-------------------|------|-----------|-----|----------------------------|-----|--------------|------------------------------|---|------|-----------------|
| # | 50 Hz | | | | 60 Hz | | | | Version | Weight kg | mm [inch] | | |
| | kW | V | min ⁻¹ | A | kW | V | min ⁻¹ | A | | | | | |
| 01 | 5,5 | Δ230/Y400 | IE3 | 1468 | 20,7/12,0 | 6,6 | Δ265/Y460 Δ230/Y400 | IE3 | 1762 1750 | 20,6/11,9 21,6/12,5 | IP 55 • ISO F • bimetal | 53,0 | 946,0 [37,3] |
| 02 | 5,5 | Δ400 | IE3 | 1468 | 12,3 | 6,6 | Δ460 Δ400 | IE3 | 1764 1751 | 12,0 12,4 | IP 55 • ISO F • bimetal | 53,0 | 946,0 [37,3] |
| 03 | | | | | | 6,6 | YY230/Y460 YY208 | IE3 | 1755 1750 | 22,1/11,1 23,3 | UL (E235514) • CSA CC329B IP 55 • ISO F • bimetal | 55,0 | 973,5 [38,4] |
| 04 | 5,5 | Δ200/Y350 | IE3 | 1474 | 27,4/15,8 | 6,6 | Δ200/Y380-400 Δ200/Y350 | IE3 | 1769 1761 | 24,1/14,5-13,8 25,4/14,65 | IP 55 • ISO F • bimetal | 63,5 | 984,0 [38,8] |
| 05 | | | | | | 6,6 | Δ400 | IE3 | 1765 | 13,6/7,9 | UL (E235514) • CSA CC329B IP 55 • ISO F • bimetal | 70,8 | 973,5 [38,4] |
| 06 | 7,5 | Δ230/Y400 | IE3 | 1445 | 28,0/16,2 | 9,0 | Δ265/Y460 Δ230/Y400 | IE3 | 1735 1720 | 26,8/15,5 30,9/17,9 | IP 55 • ISO F • bimetal | 55,0 | 986,0 [38,8] |
| 07 | 7,5 | Δ400 | IE3 | 1445 | 16,0 | 9,0 | Δ460 Δ400 | IE3 | 1735 1720 | 15,5 18,0 | IP 55 • ISO F • bimetal | 55,0 | 986,0 [38,8] |
| 08 | | | | | | 9,0 | YY230/Y460 YY208 | IE3 | 1763 1760 | 33,6/16,8 33,8 | UL (E235514) • CSA CC329B IP 55 • ISO F • bimetal | 68,0 | 973,5 [38,4] |
| 09 | 7,5 | Δ200/Y350 | IE3 | 1450 | 31,8/18,3 | 9,0 | Δ200/Y380-400 Δ200/Y350 | IE3 | 1760 1745 | 31,5/18,2-17,3 33,9/19,5 | IP 55 • ISO F • bimetal | 55,0 | 986,0 [38,8] |
| 10 | | | | | | 9,0 | Δ400 | IE3 | 1767 | 21,1 | UL (E235514) • CSA CC329B IP 55 • ISO F • bimetal | 71,4 | 973,5 [38,4] |

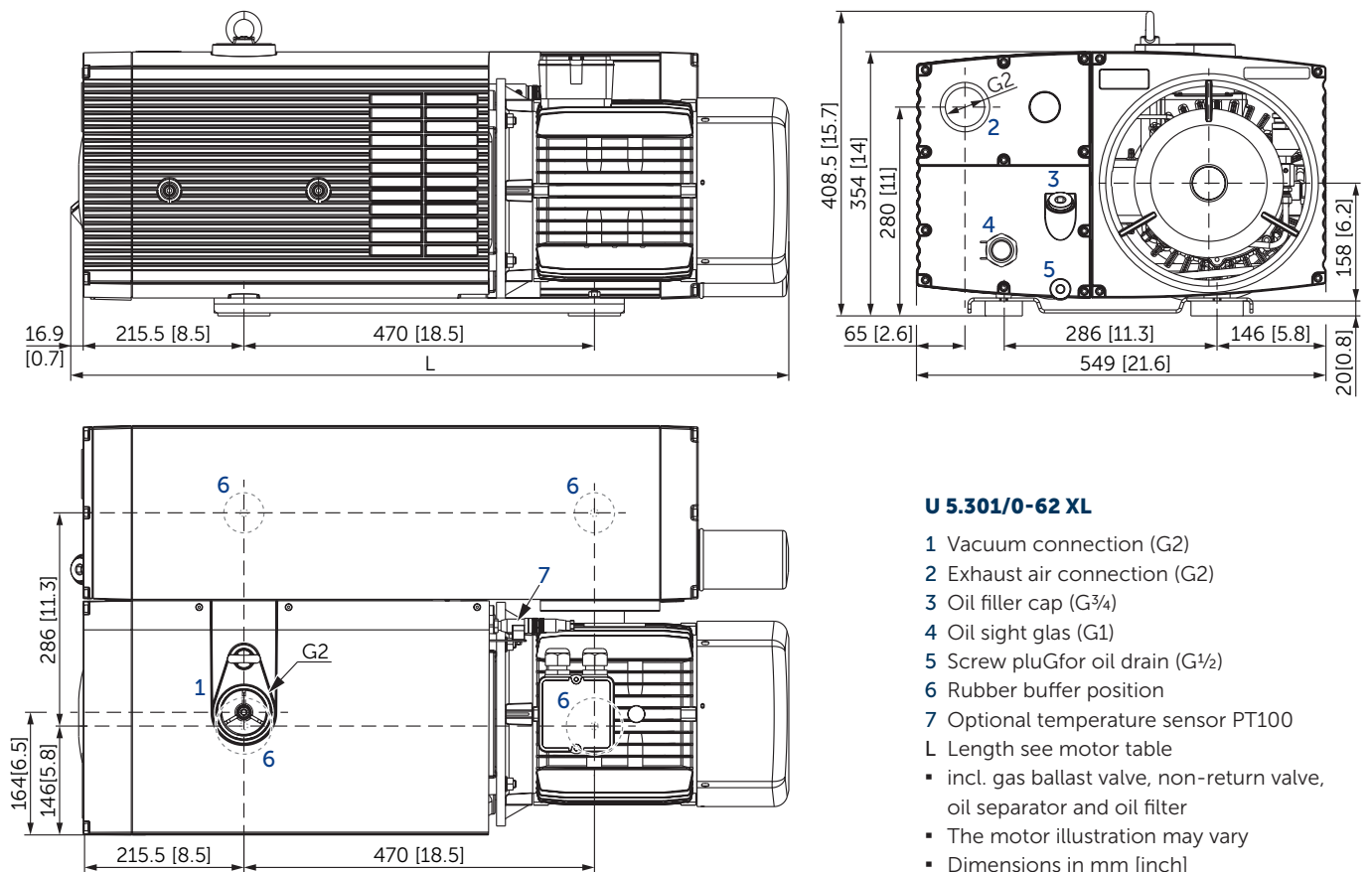
• Type plate data on current consumption and rotation speed of the motors may vary. Tolerance -1.5/+2% in each case.



Suction air rate refers to the intake pressure
 Reference data (atmosphere): 1000 mbar (100 kPa), 20°C (68°F)
 Tolerance: ±10%

+ VARIANTS AND ACCESSORIES

- **VARIAR U 5.301¹⁾** with VARIAIR frequency inverter
- **U 5.301 O2-PACK¹⁾** for packaging with an overconcentration of oxygen
- **U 5.301/0-62XL** with enlarged oil tank and high efficient triple stage oil separation, weight without motor: 105 kg, oil quantity: 13 l, further technical data, motors and characteristic curves like standard pump



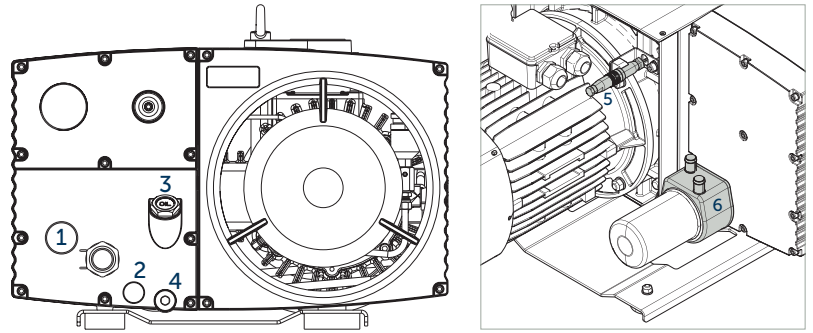
¹⁾ See separate data sheet

- Combination options on request

ACCESSORIES

- External suction filter¹⁾
- Oil:
 - Becker Lube M100 mineral
 - S100 synthetic
 - SL100 food packaging applications
 - SM100 food processing applications

- 1 Oil level switch¹⁾ (G1)
- 2 Oil temperature monitor¹⁾ (G $\frac{1}{2}$)
- 3 Maintenance indicator¹⁾ (G $\frac{3}{4}$) for oil separating elements
- 4 Ball valve (G $\frac{1}{2}$), with locking and hose connector 19 mm [0.75 inch]
- 5 Temperature sensor PT100
- 6 Water cooler U5.200-0-114.2¹⁾



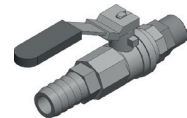
Oil level switch



Oil temperature monitor



Maintenance indicator



Ball valve

| U 5.301 versions | Gas ballast valve | | Threaded connector for exhaust air | Prepared for additional accessories (e.g. oil level switch; see above) |
|---------------------|--|--------------------------------------|------------------------------------|--|
| | Standard | for increased water vapour tolerance | | |
| U 5.301/0-00 | ✓ | | | |
| U 5.301/0-01 | vacuum 1.0 mbar absolute with opened gas ballast valve; water vapour tolerance max. 40 mbar; | | ✓ (G2) | |
| U 5.301/0-02 | water vapour capacity max. 5.0/5.6 l/h 50/60 Hz | | | ✓ |
| U 5.301/0-03 | (at 85°C operating temperature) | | ✓ (G2) | ✓ |
| U 5.301/0-04 | ✓ | | | |
| U 5.301/0-05 | vacuum 3.0 mbar absolute with opened gas ballast valve; water vapour tolerance max. 70 mbar; | | ✓ (G2) | |
| U 5.301/0-06 | water vapour capacity max. 10/13 l/h 50/60 Hz | | | ✓ |
| U 5.301/0-07 | (at 85°C operating temperature) | | ✓ (G2) | ✓ |

¹⁾ See separate data sheet
 ▪ Combination options on request



MAKE IT BECKER.