

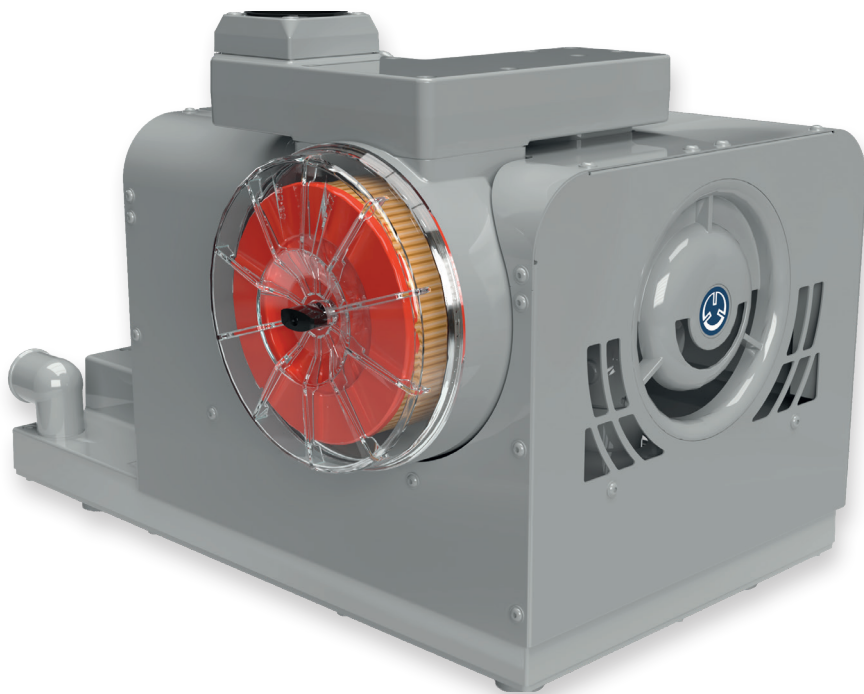
DATA SHEET

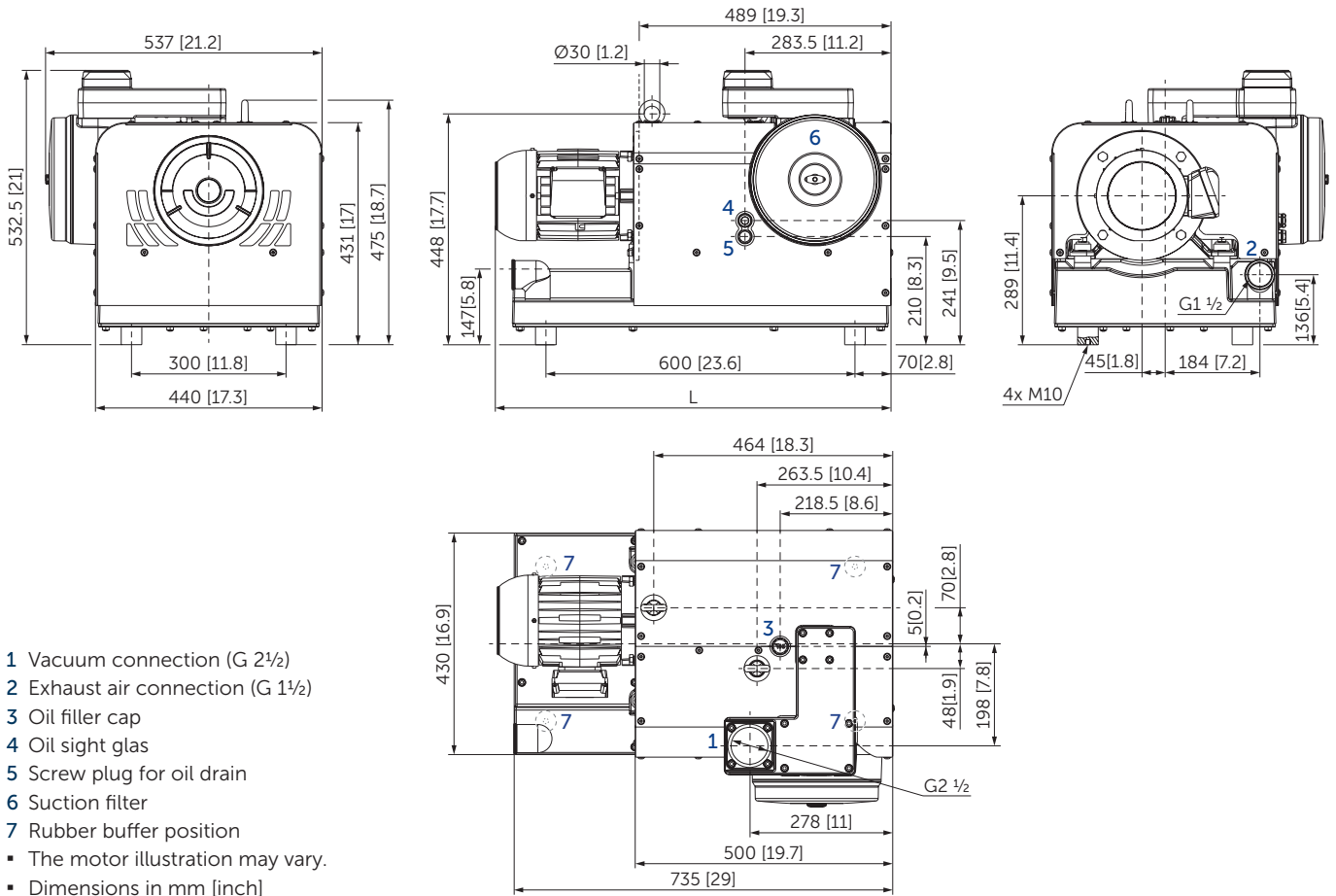
BCV 100

CLAW VACUUM PUMPS

dry and contact free compression
air-cooled

MAKE IT BECKER.



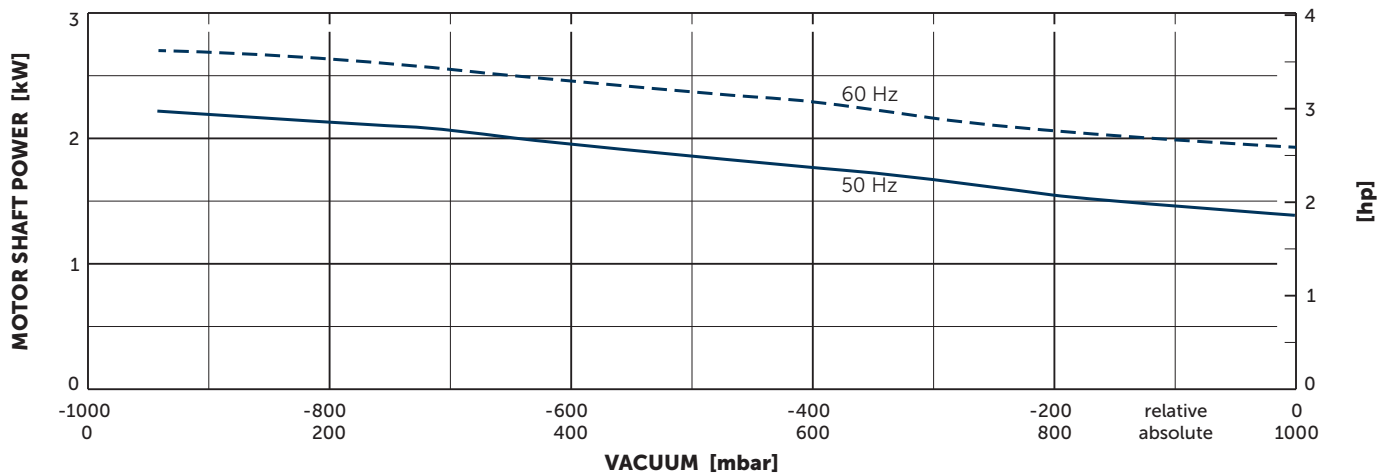
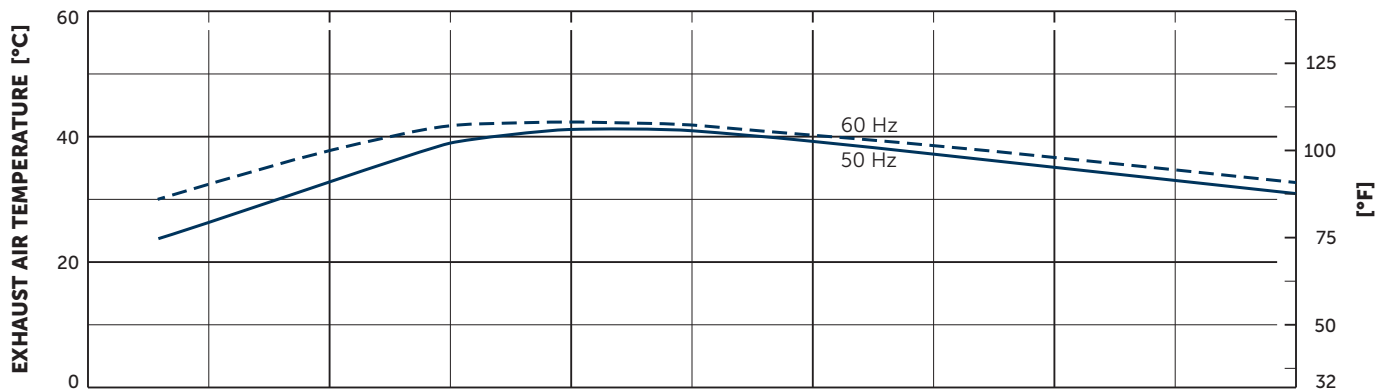
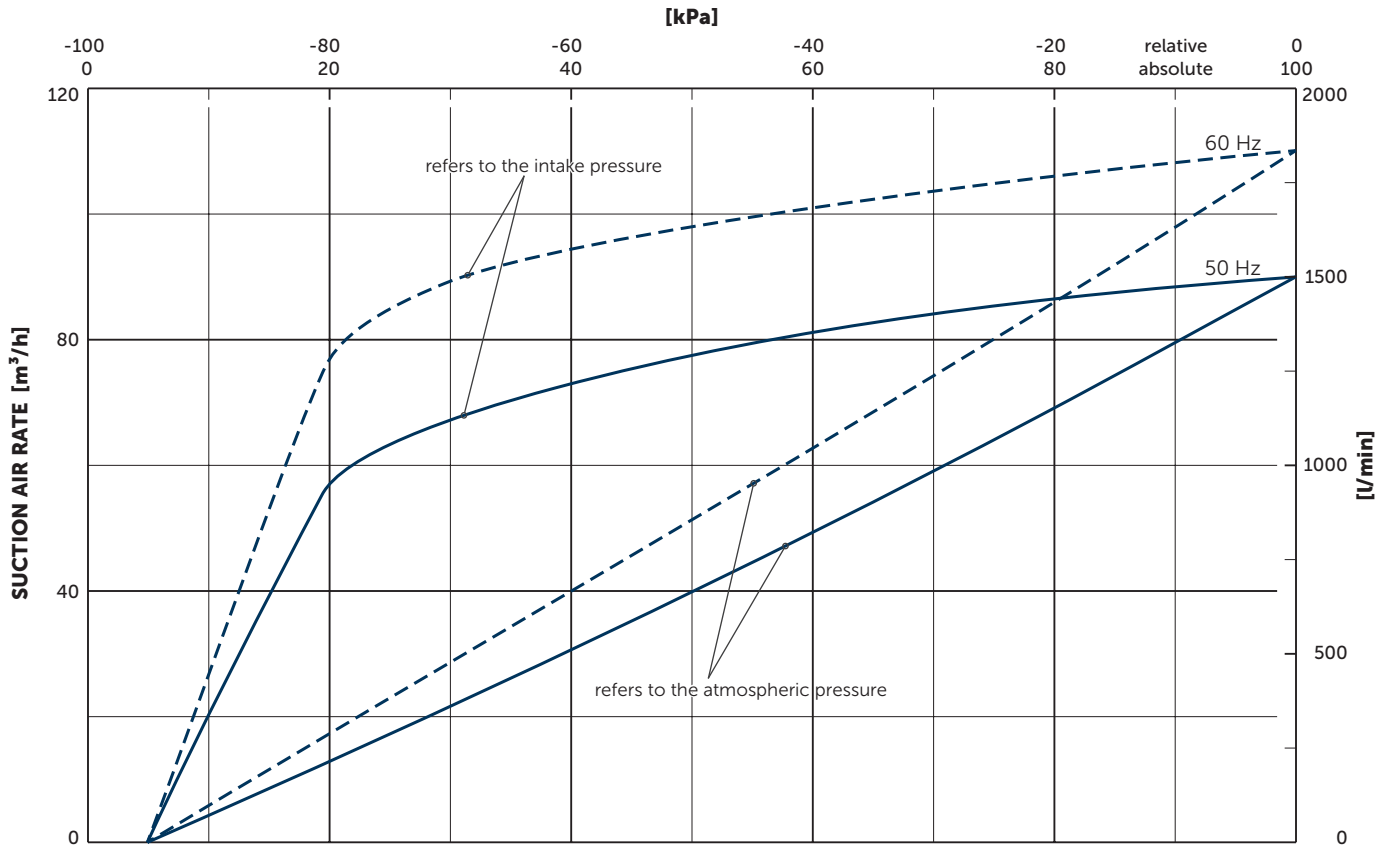


Nominal capacity		Vacuum absolute		Emission sound pressure level ¹⁾		Weight without motor
m ³ /h		mbar		dB(A)		kg
50 Hz	60 Hz	50 Hz	60 Hz	50 Hz	60 Hz	
100	120	50	50	67 (@ 400 mbar)	70 (@ 400 mbar)	96

¹⁾ According to DIN EN ISO 11203, accuracy class of measurement: class 2, extended measurement uncertainty: 3 dB
 1 m [39.4 inch] distance, at medium load, without integrated filtration, both connection sides piped

3~ Motors											L		
#	50 Hz				60 Hz				Version	Weight kg	mm [inch]		
	kW	V	min ⁻¹	A	kW	V	min ⁻¹	A					
01		Δ220/Y380	IE3	2850	7.82/4.52					UL • CSA • CC IP55 • ISO F • PTC	25	768 [30.3]	
	2.2	Δ230/Y400	IE3	2870	7.71/4.43	2.2	Y460	IE3	3490				3.89
		Δ240/Y415	IE3	2880	7.55/4.37								
						2.65	Δ230/Y400	IE1	3380				9.21/5.30
						Δ265/Y460	IE2	3455	7.86/4.53				
02	3.0	Δ230/Y400	IE3	2910	10.0/5.77	3.0	YY230/Y460	IE3	3525	10.0/5.01	UL • CSA • CC IP55 • ISO F • PTC	37	805 [31.7]
						3.0	YY208		3508	10.8			
03	3.0	Δ290/Y500	IE3	2915	7.96/4.61	3.0	Δ332/Y575	IE3	3525	6.94/4.0	UL • CSA • CC IP55 • ISO F • PTC	35	805 [31.7]
04							Δ200/Y346	IE3	3455	10.2/5.92	UL • CSA • CC IP55 • ISO F • PTC	29	799 [31.5]
	2.2	Δ200/Y346	IE3	2905	9.48/5.48	2.64	Δ220/Y380	IE3	3480	9.65/5.59			
							Y400	IE3	3490	5.51			

• Type plate data on current consumption and rotation speed of the motors may vary. Tolerance -1.5/+2% in each case.



Reference data (atmosphere): 1000 mbar (100 kPa), 20°C (68°F)
 Tolerance: ±10%

VARIANTS

- **BCV 100 PRO** with corrosion protection
- **VARIAIR BCV 100** with frequency inverter¹⁾

VARIAIR
UNIT



VARIAIR BCV 100

¹⁾ See separate data sheet



MAKE IT BECKER.