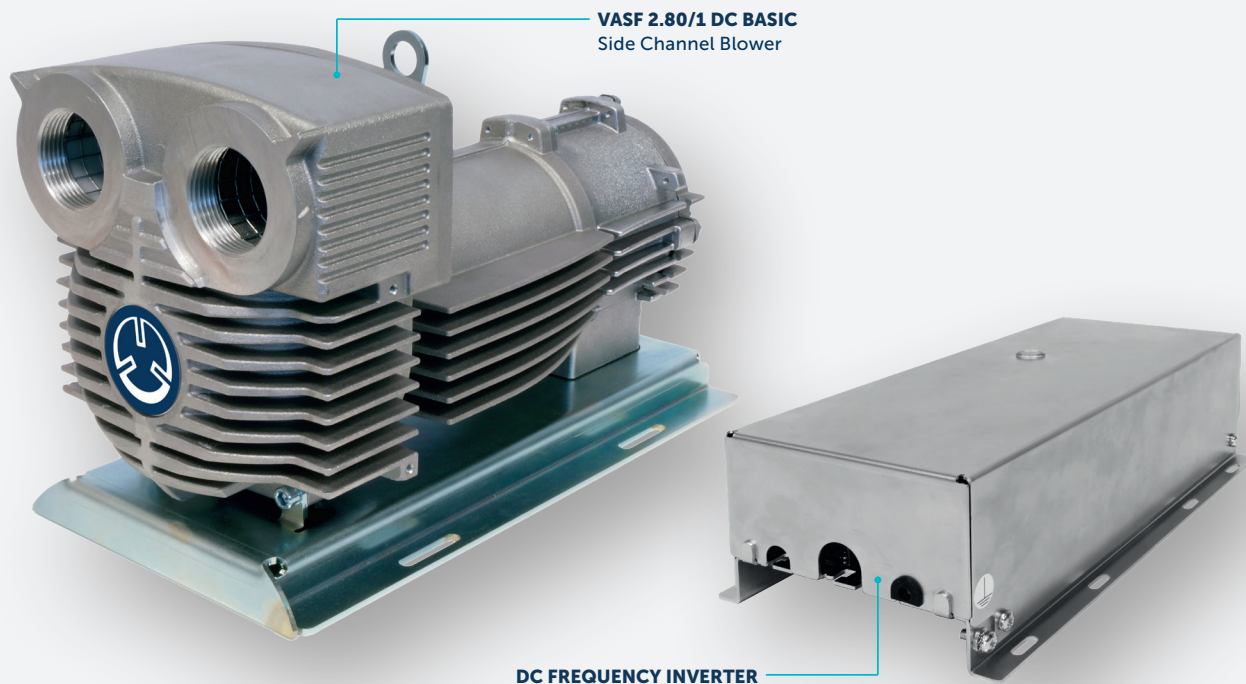


EFFICIENT SIDE CHANNEL BLOWERS FOR

STATIONARY FUEL CELLS

MAKE IT BECKER.



VASF 2.80/1 DC BASIC
Side Channel Blower

DC FREQUENCY INVERTER

BECKER SIDE CHANNEL BLOWERS

Becker's VASF blowers have demonstrated their fitness for professional use in a number of prototype- and pre-production-fuel cell systems. The new series of VASF2 blowers to fuel cell specifications combine this specific experience with over 130 years of experience in development and manufacturing of vacuum pumps and compressors.

EFFICIENCY

- Higher volume flow at same motor power due to optimized efficiency
- High-efficiency synchronous motor with efficiencies above IE3
- Exact volume flow due to variable speed operation

ADVANTAGES

- For fuel cell systems with 5 kW and above
- Low power consumption due to optimized efficiency
- Best performance combined with compact design
- DC-drive for optimal system integration
- More blowers available for higher differential pressures

VARIAIR

 **BECKER**

TECHNICAL DATA VASF 2.50/1 & VASF 2.80/1

		VASF 2.50/1	VASF 2.80/1
Max. volume flow	[m ³ /h] / [l/min] / [cfm]	48 / 800 / 28.2	90 / 1500 / 52.9
Max. pressure	[mbar] / [kPa] / [psig]	+180 / +18 / 2.6	+170 / +17 / 2.5
Speed range	[min ⁻¹]	3,000–18,000	3,000–15,000
Nominal power	[kW]	0.4	0.7
Supply voltage	[V DC]	24	48
Connection		G 1	G 1¼
Weight of blower	[kg]	7.3–8.2	8.6–9.8
Weight of inverter	[kg]	1.6	1.6
Dimensions of blower	[mm]	L295*W143*H170	L330*W165*H197
Dimensions of inverter	[mm]	L276*W132*H76	L276*W132*H76

THE BECKER SOLUTIONS

As a leader in the field of suction and blast air we offer complete solutions driven by your individual needs.

The Becker side channel blowers set the standard in various industrial applications and are the ideal solution for

- Food- and Non-food packaging
- Extraction in medical applications
- Thermoforming of plastic parts
- Pick & Place applications (e.g. electronics, food industry)
- Applications in print & paper industry
- Water treatment
- Additive Manufacturing
- Energy (e.g. stationary fuel cells)

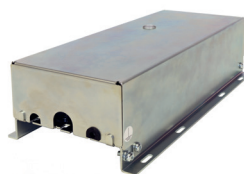
VARIAIR
SPEED FLOW



VASF 2.50 with optional integrated inlet- and outlet silencers



VASF 2.80 Basic version



Separated DC frequency inverter



VASF 2.50 with integrated frequency inverter